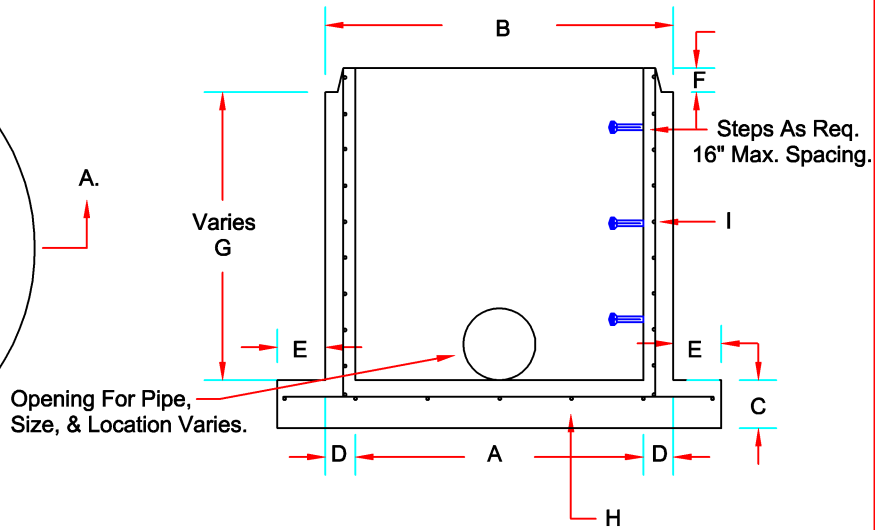


**Plan View**



**Section View A. - A.**

		48" Dia. Extended Base	60" Dia. Extended Base
A	Inside Diameter	48"	60"
B	Outside Diameter	58"	72"
C	Base Thickness	8"	8"
D	Wall Thickness	5"	6"
E	Base Extension	8"	8"
F	Tongue Height	4"	4-3/4"
G	Max Height	4'	5'
H	Rebar In Base	#4 Bar @12"O.C.E.W.	#4 Bar @16"O.C.E.W.
I	Wire In Walls	.277 Wire @6"O.C.	.277 Wire @4-3/4"O.C.
	Weight Per Foot	880#	1,300#
	Weight For Base	3,020#	4,260#

**Notes:**

1. Concrete 4,000 P.S.I. Min.
2. Constructed As Per ASTM C-478.
3. Steps Meet ASTM C-478.
4. Butyl Joints Meet ASTM C-990.
5. Flexible Pipe To Manhole Connectors Meet ASTM C-923.
6. All Rebar Meets ASTM A-615, Grade 60.
7. Reinforcing Wire Meets ASTM A-82.

Type of Coating: \_\_\_\_\_ Interior \_\_\_\_\_ Exterior \_\_\_\_\_.